

Antal - T-Lock

User's Guide

Date 11/2018 Rev.02
New version updated from 09/2019



Model

TL22.33

TL28.41

antal

DESCRIPTION

T-Lock is a watertight flush-mounted deck base to which a loop can be connected. A special toggle, which automatically locks-in, fits into the base.

It cannot be removed under load, but can easily be removed without a load on it. The toggle can be locked-in permanently which makes it non-removable.


From under the deck you can adjust the sealing plug (see the exploded view) in two positions:

1st Low position (unscrewed) and it will be possible to fit the toggle into the base and to take it off,

2nd high position (screwed) and the toggle is permanently locked, it will not be possible to take it off.

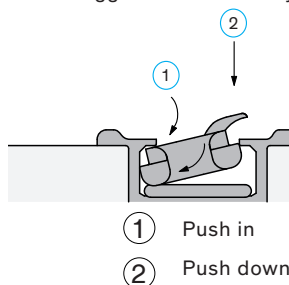
The toggle is swiveling, it can take a load in any direction.

When used as a dog-bone it will adapt to any Dyneema® loop, such as a simple loop, low friction ring with loop and a snatch block with loop.

The T-Lock is always supplied with a Dyneema Loop with toggle → 

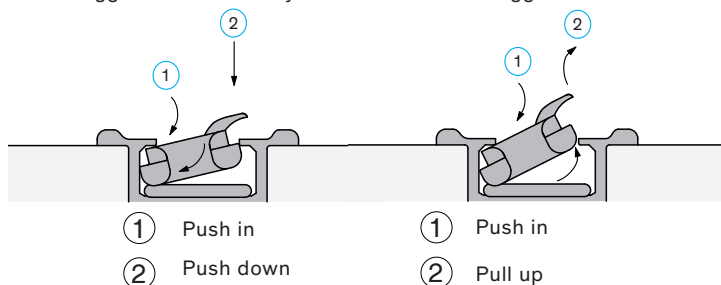
A Mounting

The Toggle is automatically locked



B Removal

The Toggle is clear



T-Lock

T-Lock is a watertight flush-mounted deck base to which a loop can be connected. A special toggle, which automatically locks-in, fits into the base.



Antal srl

Via del Progresso, 10 35127 Padova - Italy

Tel. +39 049 8701265 / 8702655

Fax: +39 049 760906

www.antal.it - antal@antal.it

T-LOCK ACCESSORIES

-Simple toggle: this is an aluminium dog-bone suitable for splicing your own loop, models in the following table are available on request.



-Loop & toggle: this is a Dyneema loop with a cover linked to the toggle, it is always included in the T-Lock.



-Low friction ring: a ring can be inserted in the Dyneema loop, models in the following table are available on request.

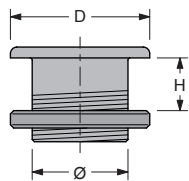


-Blocks: Looper blocks can be lashed to the toggle and easily locked-in the T-Lock base. This feature is optional.



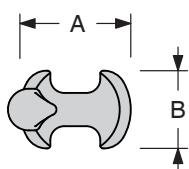
T-Lock Basis +
Looper blocks

TECHNICAL DETAILS

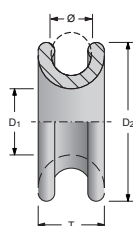


MODEL	D mm	DECK H mm	DECK HOLE Ø mm	SWL kg	WEIGHT gr
TL22.33	64	20÷37	44	2200	170
TL28.41	74	30÷48	54	3500	300

MODEL	TOGGLE mod.	LOOP & TOGGLE mod.	RING mod.
TL22.33	TT22.33	TD22.33	→ R20.14
TL28.41	TT28.41	TD28.41	→ R28.20



TOGGLE Model	A mm	B H mm
TT22.33	32	2230
TT28.41	40	28



RING MODEL	D1 mm	D2 mm	Ø mm	T mm	WEIGHT gr	SWL kg
R20.14	20	50	14	22	44	3200
R28.20	28	70	20	31	120	6400

INSTALLATION

To install the T-Lock, you will need: a drill, a hole-saw and sealant. Screws are included.

Refer to the exploded view drawing to identify the parts of T-Lock.

⚠️ **POSITIONING:** the T-Lock base (3) will be installed in deck areas suitable to support high loads

DRILLING: Cut a hole in the deck with a hole-saw. For the correct hole size to be cut, please refer to technical details

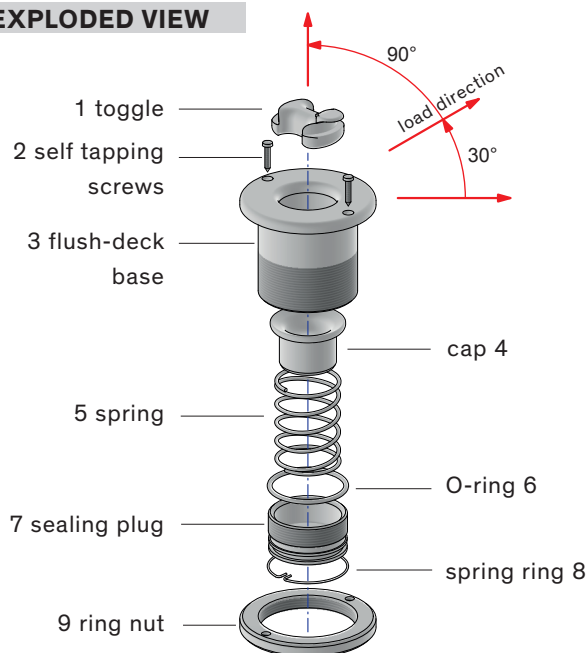
① **SEALING:** Put some sealant around the hole

② **FIXING:** put the base (3) into the hole and secure it with the two self-tapping screws (2) then tighten the ring-nut (9) strongly.

For the tightening of the ring-nut two 5mm screws in the special threaded holes can be used

⚠️ When it's not necessary to unhook the loop from the base, the sealing plug may be completely tightened so as to lock the toggle and avoid accidental unhooking.

EXPLODED VIEW



MAINTENANCE

Even though very little water can enter into the base, we recommend to drain this water and clean the base occasionally. For this purpose it is sufficient to remove the spring ring (8) and unscrew the sealing plug (7).

RACCOMANDATION

⚠️ T-Lock is not a boat lifting device.